



# OBERDORFER®

An Ingersoll Rand Business

## Model N201D Bronze Close Coupled Rubber Impeller Pump



### Features

- Pipe Size 3/8"
- Compact Size
- Bronze Construction - Corrosion Resistance
- Buna Lip Seal
- Large Vent Openings Separate Pump & Motor
- Stainless Steel Motor Shaft
- Motor Shaft Slinger Protects Motor Bearings
- Rubber Motor Grommets for Noise Isolation
- Impeller and Cam Easily Replaced
- Garden Hose Threads (External) & Pipe Threads (Internal) for Port Connections
- Available with 12, 24 and 32 volt D.C. Motor Drive
- Neoprene Impeller Standard (optional Buna Impeller - 04)
- For Close Coupled AC Motor units, see Models 211D and 211M
- Marine uses include Bilge, Washdown, Baitwell and General Transfer

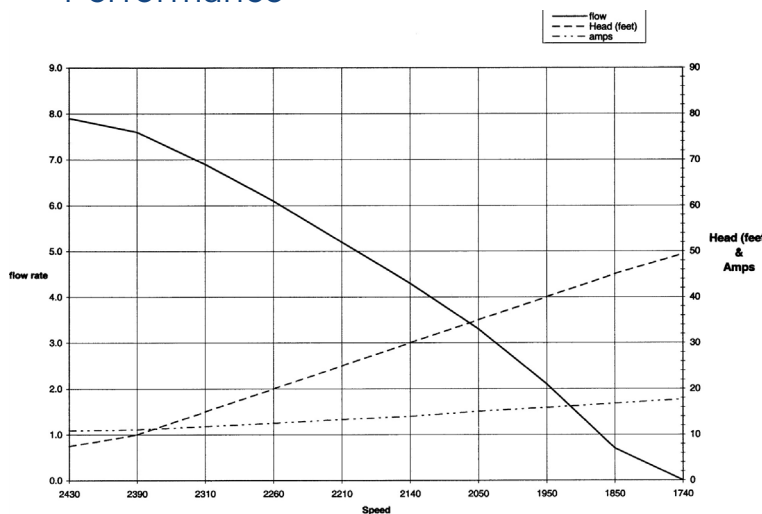
### Mounting

Horizontal motor mountings - including sidewall mountings - are recommended. The pump can be mounted in any of 4 positions 90° apart. Two screws attach pump to motor.

### Rotation

Direction of shaft rotation determines inlet and outlet ports (see line drawing).

### Performance



### Liquids & Temperature

Liquids compatible with neoprene can be pumped including fresh and salt water solutions and mild chemicals. Do not pump severe solvents or acids. When possible, flush pump with fresh water after each usage. Nitrile impellers can handle oil, contaminated water and kerosene at reduced impeller service life.

Extremes of cold and heat will affect impeller life. Limits of 40° to 180°F should be observed. Do not allow liquid in pump to freeze. Drain pump by loosening cover screws. Use methyl alcohol based anti-freeze compounds such as Zerex, Shell Zone, Pyro Permanent, Permagard, and Dowgard. Rubber impeller pumps are not suitable for pumping gasoline or solvents.

### Drive

Motor drive is clockwise facing pump end. Liquid flow direction is right to left facing pump end. Correct D.C. voltage must be supplied to motor - 12, 24 or 32 volts as specified on motor name plate.

### Suction Lift

Suction lift of 3 ft. is possible when impeller is wet. Suction lines must be air tight in order for pump to self prime. A foot valve at the beginning of suction line is recommended.

### Impeller Replacement

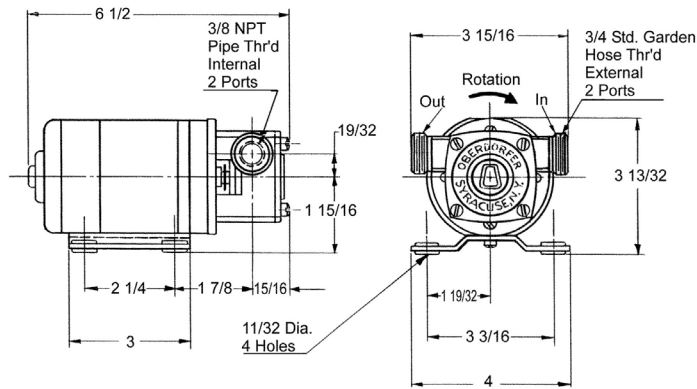
The impeller should be replaced when it is worn or damaged by debris or dry running, which causes low pressure and reduced flow. To replace it, remove the screws and cover, then pull out the impeller carefully to avoid damaging the chamber. When installing, align the flat on the impeller with the flat on the shaft, use oil, and do not force it on.



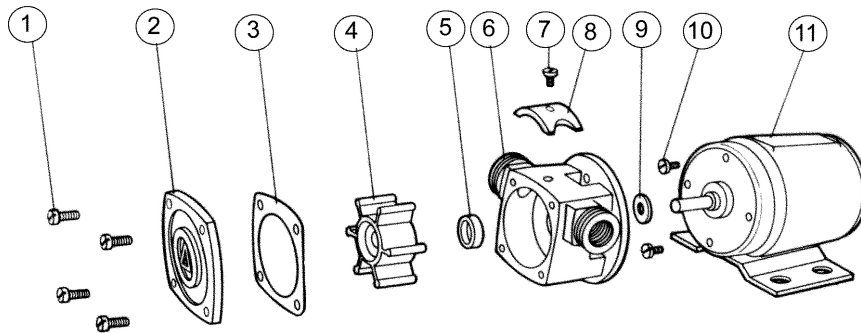
# OBERDORFER®

An Ingersoll Rand Business

## Dimensions



## Exploded View and Parts List



	1a	1b	2	3*	4*	5*	6	7	8	9	10	11	12**	Repair Kit
	Screw		Cover	O-Ring	Impeller	Lip Seal	Body	Screw	Cam	Slinger	Screw	Motor	Lock Washer	
Pump No.	Qty. 2		Qty. 1	Qty. 1	Qty. 1	Qty. 1	Qty. 1	Qty. 1	Qty. 1	Qty. 1	Qty. 2	Qty. 1	Qty. 2	
OBN201D (Neoprene)	OB6074	OB5385	OB6597B	OB9797-034	OB6617	OB6647	OB6639-1	OB7300-41	OB6592	OB6651	OB2371	--	OB5656	OB10704
OBN201D-04 (Buna)	OB6074	OB5395	OB6597B	OB9797-034	OB7885	OB6647	OB6639-1	OB7300-41	OB6592	OB6651	OB2371	--	OB5656	OB11666

\*Repair Kit contains items 3, 4 & 5.

\*\* Not Shown

Motor	Specification	Part No.
A88	1/10 HP, 2300 RPM, 12V, Single Phase, TEFC	OB8029
A89	1/10 HP, 2300 RPM, 24V, Single Phase, TEFC	OB8030
A90	1/10 HP, 2300 RPM, 32V, Single Phase, TEFC	OB8031

## 201D Pump and DC Motor Unit Performance

Motor	Volts	HP	Head (feet)	8.7	10	15	20	25	30
	FL Amps.	Nom. Speed	Pressure (PSI)	3.8	4.3	6.5	8.7	10.8	13.0
<b>A88</b>	12 V DC	1/10	Flow (GPM)	7.1	6.8	6.3	5.9	5.1	4.1
			Speed (RPM)	2290	2280	2200	2190	2130	2080
OB8029	14 Amps	2300	Current (Amps)	11.5	12.1	12.3	12.7	13.0	14.0
<b>A89</b>	24 V DC	1/10	Flow (GPM)	7.8	7.6	7.0	6.6	6.0	
			Speed (RPM)	2490	2490	2460	2440	2410	
OB8030	6 Amps	2300	Current (Amps)	5.3	5.1	5.4	5.8	6.0	
<b>A90</b>	32 V DC	1/10	Flow (GPM)	7.9	7.8	7.2	6.7	6.1	5.2
			Speed (RPM)	2530	2520	2480	2471	2450	2420
OB8031	5 Amps	2300	Current (Amps)	4.0	4.1	4.3	4.6	4.8	5.1



12500 South Pulaski Road  
Alsip, IL 60803, USA  
Phone (800) 448.1668